

■ As in recent assignments, discuss the function f , if

[1] $f(x) = 2x^2 - 8x + 5$

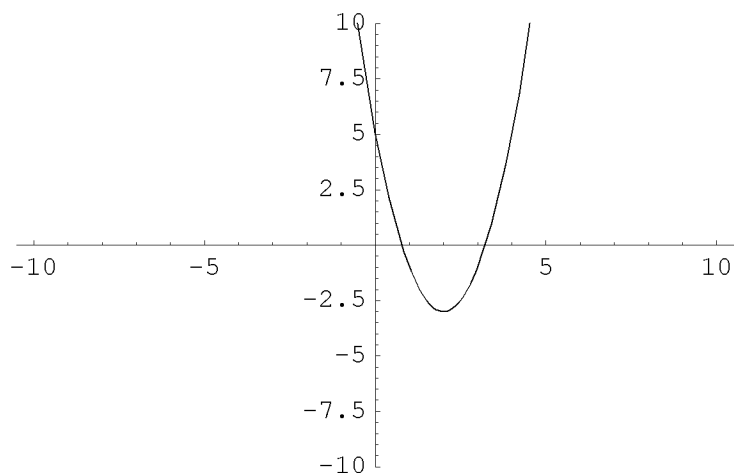
[2] $f(x) = -2x^2 - 4x + 3$

[3] $f(x) = x^2 - 3x + 2$

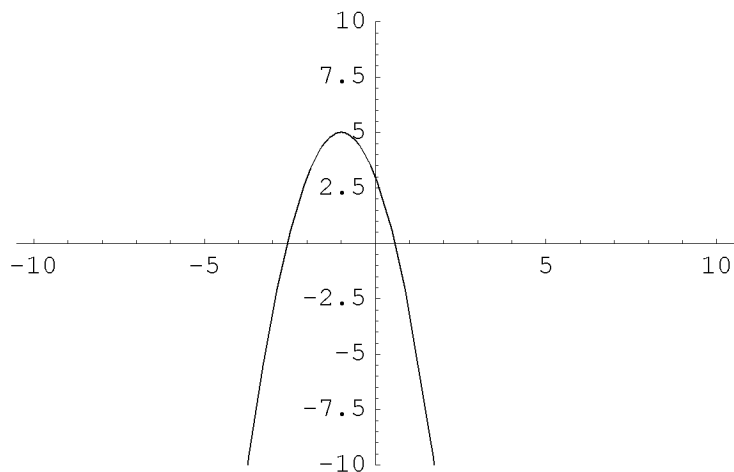
[4] $f(x) = -3x^2 + 9x + 8$

■ Plots follow, for your amusement.

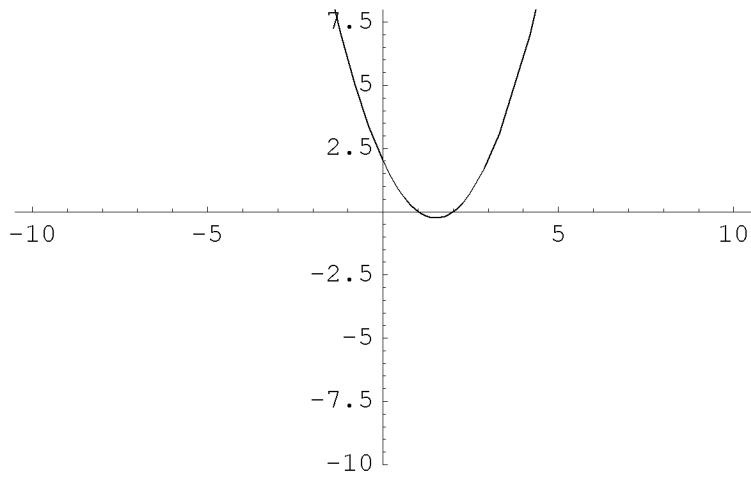
`In[19]:= Plot[2x2 - 8x + 5, {x, -10, 10}, PlotRange -> {-10, 10}];`



`In[18]:= Plot[-2x2 - 4x + 3, {x, -10, 10}, PlotRange -> {-10, 10}];`



`In[17]:= Plot[x2 - 3x + 2, {x, -10, 10}, PlotRange -> {-10, 8}];`



`In[13]:= Plot[-3 x2 + 9 x + 8, {x, -10, 10}, PlotRange → {-10, 20}];`

